

LT TOUCH ENHANCED KEY FEATURES

- Incredible 3-D graphical objects: pushbuttons, numeric entry, meters, line graphs, PID faceplates, etc. All are high-speed, vector-based objects with amazing scalability.
- 128 colors for use in objects and graphics
- Display text in up to nine different languages (user-selected by a push of a button!)
- Built-in Symbol Factory with over 4,000 symbols
- Screen and object password protection (eight user-defined levels)
- Unmatched alarm capability with history, count and details
- Recipe downloads to the PLC: 20 values into 20 registers (fixed or variable)
- Floating-point numbers to and from PLC
- Built-in clock and calendar
- Forty-character tag names mapped to PLC addresses
- Optional 512 K, 1 MB, and 2 MB flash memory cartridge for non-volatile program storage and distribution
- Expandable RAM memory cartridge for up to a total of 1 MB
- Bitmaps can now be sized on the screen in the EZPanel Software
- Import/export tags to/from Excel or CSV files - Export messages to Excel or CSV file
- Export alarms to Excel or CSV file
- Multi-state Bitmap object (bit or word selectable)
- Multi-state Indicator/Message object (bit or word selectable) allows up to four embedded data variables in messages
- Bitmap Button object
- Scalable meters and bar graphs
- Floating point support for Meters, Bar Graphs, PID and Line Graphs
- Project Simulation
- 4 New Unicode-Enabled Objects
- Pick and Apply Styles
- Language Import/Export
- Free Sizing of Touch Objects
- Bitmap Creation/Editing
- New Image Formats for Bitmap Objects
- Display Tag Name/Address on Objects
- Monitor Tag Values
- Single File Project Saving
- Project File Packager for Easy Distribution
- Overlapping of Objects

New Programming Software Enhancements

- Overlapping of objects
- Free sizing of touch objects
- Pick and Apply styles
- Display of Tag addresses on objects
- Support for Importing Image Formats: JPEG, GIF, ICO
- New 4,000 Symbol Library

DRIVERS

Serial Drivers

- Allen-Bradley DF1 Half and Full Duplex (PLC-5, SLC 500, MicroLogix 1000, 1200 and 1500)
- DH485/AIC/AIC+ for MicroLogix 1000, 1200, 1500, SLC500, 5/01, /02, /03
- Aromat Mewtocol COM
- AutomationDirect DirectLOGIC PLCs
- Control Techniques - Unidrive 2-wire, 4-wire (binary)

- Control Technology Corp. (CTC) - CTC2600, 2700 and 5100 (CTC Binary)
- EZPLC
- GE Fanuc SNPX (90/30, 90/70)
- Idec Computer Link
- Omron Host Link (C200 and C500)
- All Mitsubishi FX Series
- Modicon MODBUS RTU
- Siemens S7 MPI Adapter series PLCs
- Square D Symax - 300 Series CPU, 400 Series CPU (Symax)
- Texas Instruments - TI5x5 Series, TI505, TI545-1102, TI545-1104

Ethernet Drivers

- Allen-Bradley Ethernet I/P for ControlLogix
- Allen-Bradley DF1 over Ethernet
- GE SRTP over Ethernet
- Modbus TCP/IP Ethernet

Hardware Drivers

- DH+
- Remote I/O
- Modbus Plus
- Profibus
- DeviceNet

Enhanced AB Drivers

- Support for String & Long File types in AB drivers
- Support for full range of I/O and direct addressing of I/O for DF1 and Micrologix
- Driver for SLC 5/05 over Ethernet (legacy Ethernet I/P)
- Support ControlLogix and Compact Logix Tag names
- Support for binary files (B3:0/0) using shortcut method of B3/0, B3/1, B3/2.

SPECIFICATIONS LTP TOUCH PANEL

**LTP - S6M-F**

- 5.7" diagonal mono STN LCD
- 16 shades of gray
- NEMA 4, 4X (indoor)
- 320x240 pixel resolution
- 140 nits brightness
- 25,000 hour expected bulb half-life
- 1/4" O-ring gasket and eight mounting studs for NEMA 4/4X (indoor)
- 2.3" (59.0mm) installed depth
- Has all LTouch Enhanced objects
- Has all 4,000 Library symbols
- Programmed with LTouch Programming software.

**LTP - S6W-RS**

- 5.7" diagonal LCD
- 4 shades of blue
- NEMA 1 *
- 320x240 pixel resolution
- 140 nits brightness
- 25,000 hour expected bulb half-life
- 48 touch cells (8x6)
- 1/4" gasket and four DIN mounting clips for NEMA 1
- 2.3" (59.0mm) installed depth
- 256K RAM, not expandable
- Has all LTouch Enhanced objects
- Has all 4,000 Library symbols
- Programmed with LTouch Programming software.

**LTP - S6C-F**

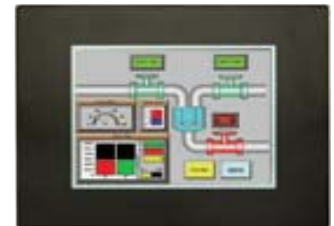
- 5.7" diagonal color STN LCD
- 128 colors
- NEMA 4, 4X (indoor)
- 320x240 pixel resolution
- 512K RAM expandable to 1.5MB
- 512K, 1MB or 2MB option flash card for memory backup
- Ethernet card optional (LTP-ETHERNET)
- Modbus TCP/IP card optional (LTPETHERPLUS)
- 180 nits brightness
- 25,000 hour expected bulb half-life
- 48 touch cells (8x6)
- 1/4" O-ring gasket and eight mounting studs for NEMA 4/4X (indoor)
- 2.3" (59.0mm) installed depth
- Has all LTouch Enhanced objects.

**LTP - S8C-F**

- 8.2" diagonal color STN LCD
- Low-profile slim bezel design
- 128 colors
- 640x480 pixel resolution
- 512K RAM expandable to 1.5MB
- 512K, 1MB or 2MB option flash card for memory backup
- Ethernet card optional (LTP-ETHERNET)
- MODBUS TCP/IP card optional (LTP-ETHERPLUS)
- 140 nits brightness
- 25,000 hour expected bulb half-life
- 192 touch cells (16x12)
- 1/4" gasket and four DIN mounting clips for NEMA 1
- 1/4" O-ring gasket and eight mounting studs for NEMA 4.

**LTP - T15C-FS**

- 15.0" diagonal color TFT LCD
- Low-profile slim bezel design
- 128 colors
- NEMA 1, FDA compliant *
- 640x480 pixel resolution
- 1MB RAM expandable to 1.5MB or 2MB
- 1MB or 2MB option flash card for memory backup
- Ethernet card optional (LTP-ETHERNET)
- MODBUS TCP/IP card optional (EZP-ETHERPLUS)
- 250 nits brightness
- 40,000 hour expected bulb half-life
- 192 touch cells (16x12)
- 1/4" gasket and four DIN mounting clips for NEMA 1
- 4.29" (108.9mm) installed depth
- Has all LTouch Enhanced objects
- Has all 4,000 Library symbols
- Programmed with LTouch Programming software.

**LTP - T10C-E**

- Low-profile slim bezel design
- 128 colors
- NEMA 1, FDA compliant *
- 640x480 pixel resolution
- 1MB RAM expandable to 1.5MB or 2MB
- 1MB or 2MB option flash card for memory backup
- Ethernet card optional (LTP-ETHERNET)
- MODBUS TCP/IP card optional (LTP-ETHERPLUS)
- 250 nits brightness
- 40,000 hour expected bulb half-life
- 192 touch cells (16x12)
- 1/4" gasket and four DIN mounting clips for NEMA 1 Programming software
- 10.4" diagonal color TFT.