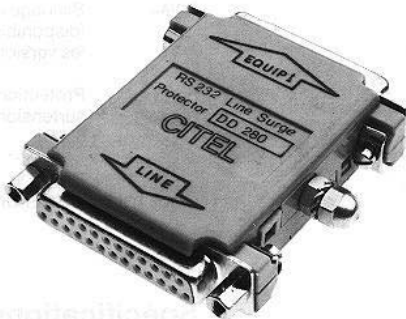
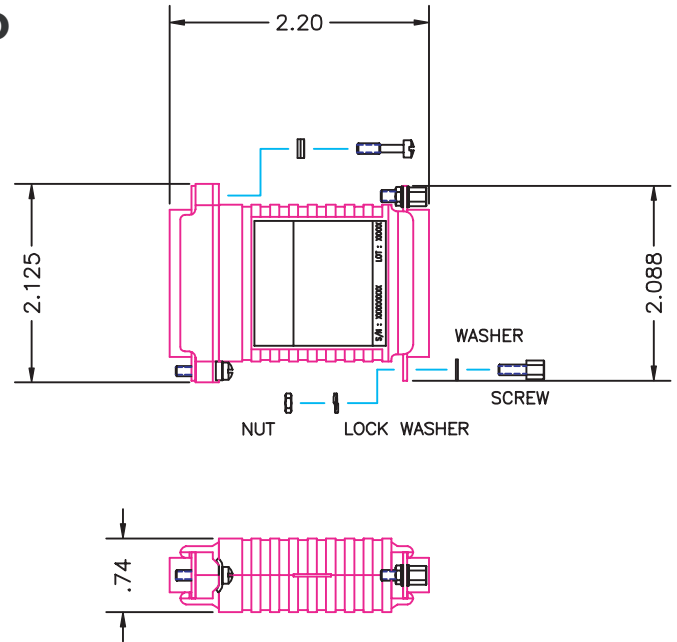
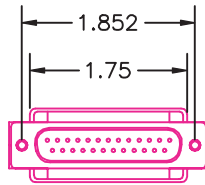


# DB25 Plug-in Surge Protectors

## DD280



## DD25ESD



Citel RS422/RS485/RS232 surge protectors were designed to be plugged in directly behind your equipment. I/O connections can be made with DB25 connectors. They are compatible with most major computers, programmable controllers and printers.

The DD280 use a combination of heavy duty gas tubes and diodes for each wire that it protects. It combines an ultra fast response time (<1 nano-second) and a high power handling capability of 10 kA (8/20 $\mu$ s waveform).

The DD25ESD series utilizes a single stage of heavy duty SADs (silicon avalanche diodes) which provides an ultra fast response time of less than 1 nano-second.

- ✓ **Ultra fast response time - less than 1 nano-second**
- ✓ **Multi-stage circuitry**
- ✓ **Plugs in directly behind your equipment**
- ✓ **Supports data rates up to 2 Mbps**

# Electrical Specifications

	DD280-24V	DD25ESD-24V	DD25ESD-6V
<b>Application :</b>	RS232	RS232	RS422/RS485
<b>Series Resistance :</b>	4.7 $\Omega$	0 $\Omega$	0 $\Omega$
<b>Capacitance :</b>	< 400 pF	< 300 pF	< 300 pF
<b>Maximum Transmission speed :</b>	19.2 Kbps	2 Mbps	2 Mbps
<b>Maximum Line Current :</b>	200 mA	200 mA	200 mA
<b>Maximum Line Voltage :</b>	24 V	24 V	6 V
<b>Clamping voltage :</b>	30 V	30 V	10 V
<b>Power handling : (8/20<math>\mu</math>s - 10 x's)</b>	10 kA	200 A	200 A
<b>End of Life Characteristics : (U=220V eff/Icc&gt;10A)</b>	Short Circuit	Short Circuit	Short Circuit
<b>Housing :</b>	Plastic	Plastic	Plastic

# Mechanical Configurations

<b>Model # :</b>	<b>Pins Protected :</b>
DD280-24V:	2, 3, 7 & 20
DD25ESD-24V:	All 25 Pins protected
DD25ESD-6V:	All 25 Pins protected

# Descriptions

## **Model # :**

DD280-24V: DB25 Male (Equipment Side) & DB25 Female (Line Side)

DD25ESD-24V: Bidirectional - DB25 Male/DB25 Female

DD25ESD-6V: Bidirectional - DB25 Male/DB25 Female