

PRHTemp101

Pressure, Humidity & Temperature Recorder

FEATURES

- ❖ N.I.S.T. traceable
- ❖ Real-time operation
- ❖ Low cost
- ❖ Programmable start time
- ❖ Reusable
- ❖ Miniature size
- ❖ User-friendly

APPLICATIONS

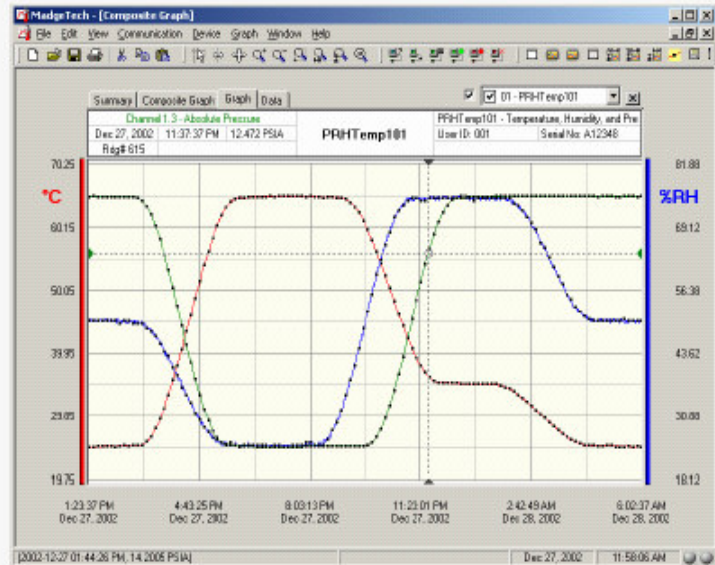
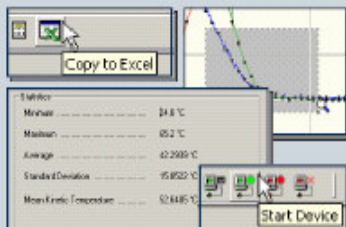
- ❖ Warehouse monitoring
- ❖ HVAC
- ❖ Medical/Pharmaceutical
- ❖ Museum monitoring
- ❖ Environmental studies
- ❖ Replace costly strip chart recorders
- ❖ Implement HACCP programs
- ❖ Research and Development



The PRHTEMP101 is a miniature, battery powered, stand alone pressure, humidity and temperature recorder. This is an all-in-one compact, portable, easy to use device that will measure and record up to 6,553 measurements per channel. The storage medium is non-volatile solid state memory, providing maximum data security even if the battery becomes discharged. The device can be started and stopped directly from your computer and it's small size allows it to fit almost anywhere. The PRHTEMP101 makes data retrieval quick and easy. Simply plug it into an empty com port and our user-friendly software does the rest.

SOFTWARE

MadgeTech's Data Recorder Software is an easy to use Windows-based software package that allows the user to effortlessly collect, display and analyze data. A variety of powerful tools allow you to examine, export, and print professional looking data with just a click of the mouse.



PRHTEMP101 SPECIFICATIONS

Temperature Range: -40 °C to +80 °C	Memory: 13,107 readings per channel
Temperature Resolution: 0.1 °C	Reading Interval: 1 reading every 5 seconds to 1 every 12 hours
Calibrated Accuracy: ±0.5 °C(0 to +50°C)	Calibration: Digital calibration through software
	Calibration Date: Automatically recorded within device
Humidity Range: 0 to 100% RH	Power: 3.6V lithium battery included
Humidity Resolution: 0.5% RH	User Replaceable Battery: 1 year typical
Calibrated Accuracy: ±3%RH (±2% RH typical at 25 °C)	Data Format: Date and time stamped °C, °F, °K, °R ; %RH, mg/ml water vapor concentration; PSIA, inHg, mmHg, bar, atm, Torr, Pa, kPa, MPa, altitude
Pressure Range: 0 to 30 PSIA	Time Accuracy: ±1 minute/month (at 20 °C, RS232 cable not in use)
Pressure Resolution: 0.002 PSIA	Computer Interface: PC serial or RS232C COM (Interface cable required); 2,400 baud
Calibrated Accuracy: ±1.0% FSR at 25 °C; ±0.2% typical	Software: Windows 95/98/ME/NT/2000/XP based software
Start Time: Software programmable start time and date. Up to six months in advance	Operating Environment: -40 °C to +80 °C, 0 to 95 %RH non-condensing
Real Time Recording: May be used with PC to monitor and record data in real time	Dimensions: 1.6" x 2.3" x 0.9" (41mm x 59mm x 22mm)
	Weight: 2 oz (60 g)

PRHTEMP101 SOFTWARE FEATURES

Multiple Graphs: Simultaneously analyze data from several units or deployments; easily switch to a single data series	Statistics: Calculate averages, min, max, standard deviation, and mean kinetic temperature with the touch of a button
Real-Time Recording: Collect and display data in real-time while continuing to log	Export Data: Export data in a variety of common formats, or switch to Excel with a single click
Graphical Cursor: One click displays readings by time, value, parameter or sample number	Calibration: Fully digital calibration function automatically stores parameters in device
Data Table: Instantly access tabular view for detailed dates, times, values, and annotations	Logger Configuration: Easy set up and launch of data loggers with immediate or delayed start, preferred sample rate, and device ID
Scaling Options: Autoscale function fits data to the screen, or allows user to manually enter their own values	Communications: Automatically sets up communications port, or lets user set configuration
Formatting Options: Change colors, line styles, plotting options, show or hide channels in an instant	Printing: Automatically print graphical or tabular data

**As part of our commitment to continuous product improvement, MadgeTech reserves the right to change product specifications without notice

ORDERING INFORMATION		ASK ABOUT OUR OTHER DATA RECORDERS	
Model	Description	Temperature	Voltage
PRHTEMP101	Pressure, Humidity & Temperature Recorder	Humidity	Current
IFC101	Software, manual and 9-pin computer interface cable	Pressure	Submersible
N.I.S.T. Cert	N.I.S.T. Calibration Certificate	pH	Intrinsically Safe
		Level	RF Transmitters
		Shock/Vibration	Multi-parameter
		Pulse/Event	

PRHTemp110

Pressure, Humidity & Temperature Recorder

FEATURES

- ❖ 10 year battery life
- ❖ High speed download
- ❖ N.I.S.T. traceable
- ❖ Real-time operation
- ❖ Low cost
- ❖ Programmable start time
- ❖ Reusable
- ❖ Miniature size
- ❖ User-friendly

APPLICATIONS

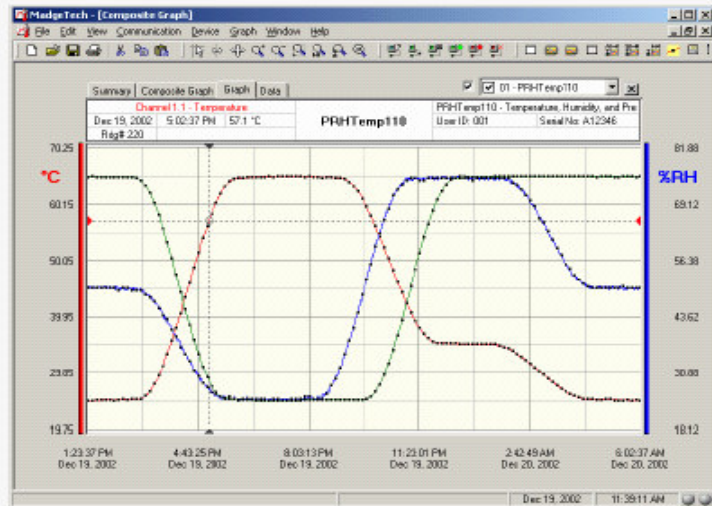
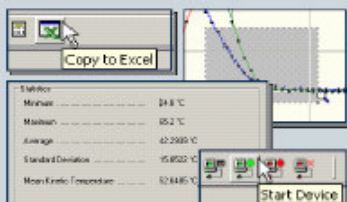
- ❖ Remote data logging
- ❖ Warehouse monitoring
- ❖ HVAC
- ❖ Medical/Pharmaceutical
- ❖ Museum monitoring
- ❖ Environmental studies
- ❖ Replace costly strip chart recorders
- ❖ Implement HACCP programs



The PRHTemp110 is a miniature, battery powered, stand alone pressure, humidity and temperature recorder. The PRHTemp110 features a real-time clock module that extends the battery life to > 10 years* and allows for high speed downloads. This is an all-in-one compact, portable, easy to use device that will measure and record up to 13,107 measurements per channel. The storage medium is non-volatile solid state memory, providing maximum data security even if the battery becomes discharged. The device can be started and stopped directly from your computer and it's small size allows it to fit almost anywhere. The PRHTemp110 makes data retrieval quick and easy. Simply plug it into an empty com port and our user-friendly software does the rest.

SOFTWARE

MadgeTech's Data Recorder Software is an easy to use Windows-based software package that allows the user to effortlessly collect, display and analyze data. A variety of powerful tools allow you to examine, export, and print professional looking data with just a click of the mouse.



PRHTEMP110 SPECIFICATIONS

Temperature Range: -40 °C to +80 °C	Memory: 13,107 readings per channel
Temperature Resolution: 0.1 °C	Reading Interval: 1 reading every 2 seconds to 1 every 12 hours
Calibrated Accuracy: ±0.5 °C(0 to +50°C)	Calibration: Digital Calibration through software
	Calibration Date: Automatically recorded within device
Humidity Range: 0 to 100% RH	Power: 3.6V lithium battery included
Humidity Resolution: 0.5% RH	*User Replaceable Battery: 10 years (15 minute reading rate, 25 °C)
Calibrated Accuracy: ±3%RH (±2% RH typical at 25 °C)	Data Format: Date and time stamped °C, °F, °K, °R ; %RH, mg/ml water vapor concentration; PSIA, inHg, mmHg, bar, atm, Torr, Pa, kPa, MPa, altitude
Pressure Range: 0 to 30 PSIA	Time Accuracy: ±1 minute/month (at 20 °C to 30 °C)
Pressure Resolution: 0.002 PSIA	Computer Interface: PC serial or RS232C COM (Interface cable required); 57,600 baud
Calibrated Accuracy: ±1.0% FSR at 25 °C; ±0.2% typical	Software: Windows 95/98/ME/NT/2000/XP based software
Start Time: Software programmable Start time and date. Up to six months in advance	Operating Environment: -40 °C to +80 °C, 0 to 95 %RH non-condensing
Real Time Recording: May be used with PC to monitor and record data in real time	Dimensions: 1.61" x 2.26" x 0.76" (41mm x 58mm x 20mm)
	Weight: 2 oz (60 g)

SOFTWARE FEATURES

Multiple Graphs: Simultaneously analyze data from several units or deployments; easily switch to a single data series	Statistics: Calculate averages, min, max, standard deviation, and mean kinetic temperature with the touch of a button
Real-Time Recording: Collect and display data in real-time while continuing to log	Export Data: Export data in a variety of common formats, or switch to Excel with a single click
Graphical Cursor: One click displays readings by time, value, parameter or sample number	Calibration: Fully digital calibration function automatically stores parameters in device
Data Table: Instantly access tabular view for detailed dates, times, values, and annotations	Logger Configuration: Easy set up and launch of data loggers with immediate or delayed start, preferred sample rate, and device ID
Scaling Options: Autoscale function fits data to the screen, or allows user to manually enter their own values	Communications: Automatically sets up communications port, or lets user set configuration
Formatting Options: Change colors, line styles, plotting options, show or hide channels in an instant	Printing: Automatically print graphical or tabular data

**As part of our commitment to continuous product improvement, MadgeTech reserves the right to change product specifications without notice

ORDERING INFORMATION		ASK ABOUT OUR OTHER DATA RECORDERS	
Model	Description	Temperature	Voltage
PRHTEMP110	Pressure, Humidity & Temperature Recorder	Humidity	Current
IFC110	Software, manual and 9-pin computer interface cable	Pressure	Submersible
N.I.S.T. Cert	N.I.S.T. Calibration Certificate	pH	Intrinsically Safe
		Level	RF Transmitters
		Shock/Vibration	Multi-parameter
		Pulse/Event	