

RHTEMP 1000

Rugged Humidity & Temperature Recorder

FEATURES

- ❖ Rugged
- ❖ Reusable
- ❖ Programmable start time
- ❖ Real-time operation
- ❖ Automatic dew point & vapor concentration calculations
- ❖ N.I.S.T. traceable
- ❖ User-friendly
- ❖ Low cost

APPLICATIONS

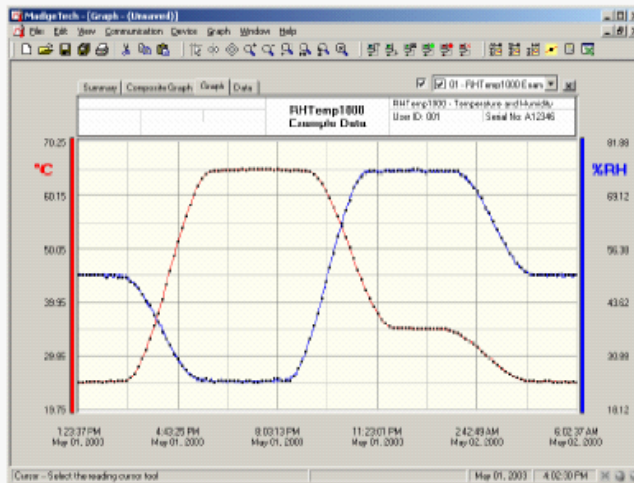
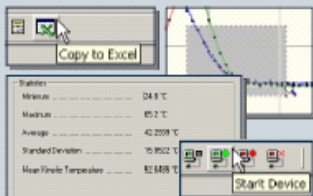
- ❖ Implement HACCP Programs
- ❖ Autoclave Verification
- ❖ Food preparation and processing
- ❖ Environmental studies
- ❖ Warehouse Monitoring
- ❖ Hostile environment monitoring
- ❖ Medical/Pharmaceutical



The RHTEMP1000 humidity and temperature logger is a rugged, water resistant, battery powered, stand alone device which can be used to automatically record humidity and temperature. This all in one compact, portable, easy to use device is able to measure and record up to 21,845 humidity and temperature measurements. The RHTEMP1000 is ideal for use in harsh environments. Its real time clock ensures that all the data is time and date stamped. The storage medium is non-volatile solid state memory, providing maximum data security even if the battery becomes discharged. The device can be started and stopped directly from your computer and its small size allows it to fit almost anywhere. The RHTEMP1000 makes data retrieval quick and easy. Simply plug the device into an empty COM port and our user-friendly software does the rest.

SOFTWARE

MadgeTech's Data Recorder Software is an easy to use Windows-based software package that allows the user to effortlessly collect, display and analyze data. A variety of powerful tools allow you to examine, export, and print professional looking data with just a click of the mouse.



RHTEMP1000 SPECIFICATIONS

Temperature Sensor: Semiconductor	Memory: 21,845 readings per channel
Temperature Range: -40 °C to +80 °C	Reading Interval: 1 reading every 2 seconds to 1 every 12 hours
Temperature Resolution: 0.1 °C	Calibration: Digital Calibration through software
Calibrated Accuracy: ±0.5 °C (0 to +50°C)	Calibration Date: Automatically recorded within device
Humidity Sensor: Semiconductor	Power: 3.6V lithium battery included
Humidity Range: 0 to 100% RH	User Replaceable Battery: 1 year typical at 25 °C, 1 minute reading intervals
Humidity Resolution: 0.6% RH	Data Format: Date and time stamped °C, °F, °K, %RH, mg/ml water vapor concentration
Calibrated Accuracy: ±3%RH (±2% RH typical at 25 °C)	Time Accuracy: ±1 minute/month (at 20 °C)
Response Time: 90% change in 80 seconds in slow moving air	Computer Interface: PC serial or RS232C COM (Interface cable required); 2400 baud
Specified Accuracy Range: 10 to 80 %RH, +10 °C to +40 °C	Software: Windows 95/98/ME/NT/2000/XP based software
Start Time: Software programmable Start time and date. Up to six months in advance.	Operating Environment: -40 °C to +80 °C, 0 to 100 %RH
Real Time Recording: May be used with PC to monitor and record data in real time	Dimensions: 5.4" x 1.0" dia. (138mm x 26mm dia.)
	Weight (Aluminum) : 5 oz (145 g)
	Weight (Stainless) : 10 oz (285 g)

RHTEMP1000 SOFTWARE FEATURES

Multiple Graphs: Simultaneously analyze data from several units or deployments; easily switch to a single data series	Statistics: Calculate averages, min, max, standard deviation, and mean kinetic temperature with the touch of a button
Real-Time Recording: Collect and display data in real-time while continuing to log	Export Data: Export data in a variety of common formats, or switch to Excel with a single click
Graphical Cursor: One click displays readings by time, value, parameter or sample number	Calibration: Fully digital calibration function automatically stores parameters in device
Data Table: Instantly access tabular view for detailed dates, times, values, and annotations	Logger Configuration: Easy set up and launch of data loggers with immediate or delayed start, preferred sample rate, and device ID
Scaling Options: Autoscale function fits data to the screen, r allows user to manually enter their own values	Communications: Automatically sets up communications port, or lets user set configuration
Formatting Options: Change colors, line styles, plotting options, show or hide channels in an instant	Printing: Automatically print graphical or tabular data

**As part of our commitment to continuous product improvement, MadgeTech reserves the right to change product specifications without notice.

ORDERING INFORMATION		ASK ABOUT OUR OTHER DATA RECORDERS	
Model	Description	Temperature	pH
RHTEMP1000	Rugged Humidity and Temperature Recorder	Humidity	Level
IFC101	Software, manual and 9-pin computer interface cable	Pressure	Shock/Vibration
N.I.S.T. Cert	N.I.S.T. Calibration Certificate	Bridge/Strain	Submersible
		Current	Intrinsically Safe
		Pulse/Event	RF Transmitters
		Voltage	Multi-parameter

RHTEMP 1000IS

Intrinsically Safe Humidity & Temperature Recorder

FEATURES

- ❖ Intrinsically safe
- ❖ Rugged
- ❖ Reusable
- ❖ Programmable start time
- ❖ Real-time operation
- ❖ Automatic dew point & vapor concentration calculations
- ❖ N.I.S.T. traceable
- ❖ User-friendly
- ❖ Low cost

APPLICATIONS

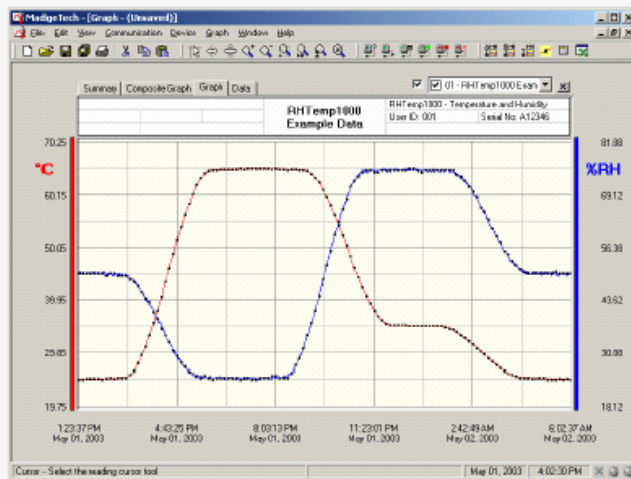
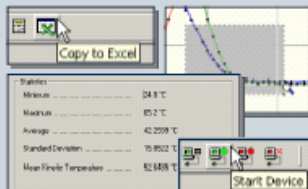
- ❖ EtO sterilization
- ❖ Implement HACCP programs
- ❖ Food preparation and processing
- ❖ Environmental studies
- ❖ Warehouse monitoring
- ❖ Hostile environment monitoring
- ❖ Medical/Pharmaceutical



The RHTEMP1000IS humidity and temperature logger is a rugged, water resistant, battery powered, stand alone device which can be used to automatically record humidity and temperature. This all in one compact, portable, easy to use device is able to measure and record up to 21,845 humidity and temperature measurements. The RHTEMP1000IS has been Factory Mutual certified as intrinsically safe for Class I, Division 1, groups A, B, C and D and non-incendive for Class I, Division 2 groups A, B, C and D hazardous environments. This certification makes the device ideal for uses such as EtO sterilization, environmental studies and numerous other hostile environment applications. Its real time clock ensures that all the data is time and date stamped. The storage medium is non-volatile solid state memory, providing maximum data security even if the battery becomes discharged. The RHTEMP1000IS can be started and stopped directly from your computer and its small size allows it to fit almost anywhere. The device makes data retrieval quick and easy. Simply plug the device into an empty COM port and our user-friendly software does the rest.

SOFTWARE

MadgeTech's Data Recorder Software is an easy to use Windows-based software package that allows the user to effortlessly collect, display and analyze data. A variety of powerful tools allow you to examine, export, and print professional looking data with just a click of the mouse.



RHTEMP1000IS SPECIFICATIONS

Temperature Sensor: Semiconductor	Memory: 21,845 readings per channel
Temperature Range: -40 °C to +80 °C	Reading Interval: 1 reading every 2 seconds to 1 every 12 hours
Temperature Resolution: 0.1 °C	Calibration: Digital calibration through software
Calibrated Accuracy: ±0.5 °C (0 to +50°C)	Calibration Date: Automatically recorded within device
	Power: 3.6V lithium battery included
Humidity Sensor: Semiconductor	User Replaceable Battery: 1 year typical at 25 °C, 1 minute reading intervals
Humidity Range: 0 to 100% RH	Data Format: Date and time stamped °C, °F, °K, °R ; %RH, mg/ml water vapor concentration
Humidity Resolution: 0.5% RH	Time Accuracy: ±1 minute/month at 20 °C (RS232 port not in use)
Calibrated Accuracy: ±3%RH (±2% RH typical at 25 °C)	Computer Interface: PC serial or RS232C COM (Interface cable required); 2400 baud
Response Time: 90% change in 60 seconds in slow moving air	Software: Windows 95/98/ME/NT/2000/XP based software
Specified Accuracy Range: 10 to 80 %RH, +10 °C to +40 °C	Operating Environment: -40 °C to +80 °C, 0 to 100 %RH (case properly sealed)
Real Time Recording: May be used with PC to monitor and record data in real time	Dimensions: 5.4" x 1.0" dia. (138mm x 26mm dia.)
Start Time: Software programmable start time and date. Up to six months in advance.	Weight (Aluminum): 5 oz (145 g)
	Weight (Stainless): 10 oz (285 g)

RHTEMP1000IS SOFTWARE FEATURES

Multiple Graphs: Simultaneously analyze data from several units or deployments; easily switch to a single data series	Statistics: Calculate averages, min, max, standard deviation, and mean kinetic temperature with the touch of a button
Real-Time Recording: Collect and display data in real-time while continuing to log	Export Data: Export data in a variety of common formats, or switch to Excel with a single click
Graphical Cursor: One click displays readings by time, value, parameter or sample number	Calibration: Fully digital calibration function automatically stores parameters in device
Data Table: Instantly access tabular view for detailed dates, times, values, and annotations	Logger Configuration: Easy set up and launch of data loggers with immediate or delayed start, preferred sample rate, and device ID
Scaling Options: Autoscale function fits data to the screen, or allows user to manually enter their own values	Communications: Automatically sets up communications port, or lets user set configuration
Formatting Options: Change colors, line styles, plotting options, show or hide channels in an instant	Printing: Automatically print graphical or tabular data

**As part of our commitment to continuous product improvement, MadgeTech reserves the right to change product specifications without notice.

ORDERING INFORMATION		ASK ABOUT OUR OTHER DATA RECORDERS	
Model	Description	Temperature	pH
RHTEMP1000IS	Intrinsically Safe Humidity and Temperature Recorder	Humidity	Level
IFC101	Software, manual and 9-pin computer interface cable	Pressure	Shock/Vibration
N.I.S.T. Cert	N.I.S.T. Calibration Certificate	Bridge/Strain	Submersible
		Current	Intrinsically Safe
		Pulse/Event	RF Transmitters
		Voltage	Multi-parameter