



RHTemp101 Humidity & Temperature Recorder

FEATURES

- ❖ N.I.S.T. traceable
- ❖ Real-time operation
- ❖ Low cost
- ❖ Programmable start time
- ❖ Reusable
- ❖ Miniature size
- ❖ User-friendly

APPLICATIONS

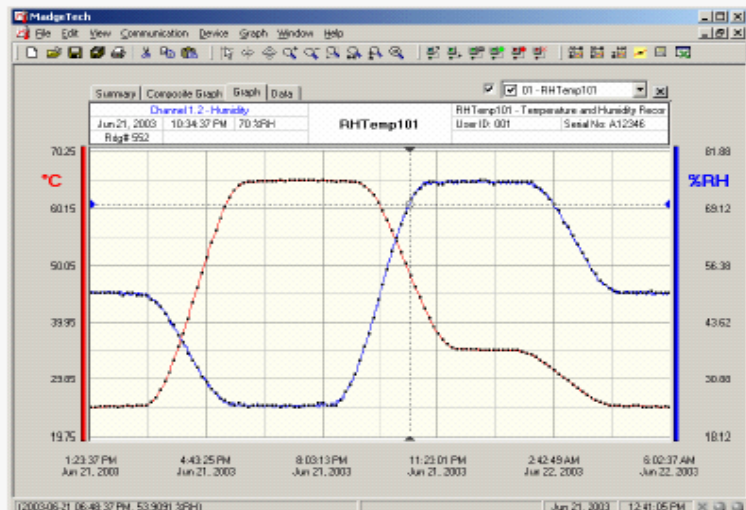
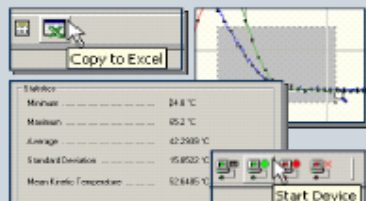
- ❖ Warehouse monitoring
- ❖ HVAC
- ❖ Medical/pharmaceutical
- ❖ Museum monitoring
- ❖ Environmental studies
- ❖ Replace costly strip-chart recorders
- ❖ Implement HACCP programs
- ❖ Clean room monitoring
- ❖ Research and development



The RHTEMP101 is a miniature battery-powered, stand-alone humidity and temperature recorder. This is an all-in-one compact, portable, easy-to-use device that will measure and record up to 21,845 measurements per channel. The storage medium is non-volatile solid state memory, providing maximum data security even if the battery becomes discharged. The device can be started and stopped directly from your computer and it's small size allows it to fit almost anywhere. The RHTEMP101 makes data retrieval quick and easy. Simply plug it into an empty com port and our user-friendly software does the rest.

SOFTWARE

MadgeTech's Data Recorder Software is an easy-to-use Windows-based software package that allows the user to effortlessly collect, display and analyze data. A variety of powerful tools allow you to examine, export, and print professional-looking data with just a click of the mouse.





RHTEMP101 SPECIFICATIONS

Temperature Sensor: Semiconductor	Memory: 21,845 readings per channel
Temperature Range: -40 °C to +80 °C	Reading Interval: 1 reading every 2 seconds to 1 every 12 hours
Temperature Resolution: 0.1 °C	Calibration: Digital calibration through software
*Calibrated Accuracy: ±0.5 °C (0 to +50 °C) ±1.0 °C (-10 to +80 °C) ±2.0 °C (-40 to +80 °C)	Calibration Date: Automatically recorded within device
Humidity Sensor: Semiconductor	Power: 3.6V lithium battery included
Humidity Range: 0 to 100% RH	User Replaceable Battery: 1 year typical
Humidity Resolution: 0.5% RH	Data Format: Date and time stamped °C, °F, °K, °R ; %RH, mg/ml water vapor concentration
Calibrated Accuracy: ±3%RH (±2% RH typical at 25 °C)	Time Accuracy: ±1 minute/month (at 20 °C, RS232 cable not in use)
Response Time: 90% change in 60 seconds in slow moving air	Computer Interface: PC serial or RS232C COM (Interface cable required); 2,400 baud
Start Time: Software programmable start time and date. Up to six months in advance	Software: Windows 95/98/ME/NT/2000/XP based software
Real Time Recording: May be used with PC to monitor and record data in real time	Operating Environment: -40 °C to +80 °C, 0 to 95 %RH non-condensing
	Dimensions: 1.4" x 2.2" x 0.6" (35mm x 55mm x 16mm)
	Weight: 1 oz (30 g)

*Calibrated accuracies are typical values based on a single point calibration performed at ambient temperature. Device may be calibrated in desired range to improve accuracy.

RHTEMP101 SOFTWARE FEATURES

Multiple Graphs: Simultaneously analyze data from several units or deployments; easily switch to a single data series	Statistics: Calculate averages, min, max, standard deviation, and mean kinetic temperature with the touch of a button
Real-Time Recording: Collect and display data in real-time while continuing to log	Export Data: Export data in a variety of common formats, or switch to Excel with a single click
Graphical Cursor: One click displays readings by time, value, parameter or sample number	Calibration: Fully digital calibration function automatically stores parameters in device
Data Table: Instantly access tabular view for detailed dates, times, values, and annotations	Logger Configuration: Easy set up and launch of data loggers with immediate or delayed start, preferred sample rate, and device ID
Scaling Options: Autoscale function fits data to the screen, or allows user to manually enter their own values	Communications: Automatically sets up communications port, or lets user set configuration
Formatting Options: Change colors, line styles, plotting options, show or hide channels in an instant	Printing: Automatically print graphical or tabular data

**As part of our commitment to continuous product improvement, MadgeTech reserves the right to change product specifications without notice

ORDERING INFORMATION		ASK ABOUT OUR OTHER DATA RECORDERS	
Model	Description	Temperature	Voltage
RHTEMP101	Humidity & Temperature Recorder	Humidity	Current
IFC110	Software, manual and 9-pin computer interface cable	Pressure	Submersible
N.I.S.T. Cert	N.I.S.T. Calibration Certificate	pH	Intrinsically Safe
		Level	RF Transmitters
		Shock/Vibration	Multi-parameter
		Pulse/Event	



WWW.LT-AUTOMATION.COM

RHTemp110 Humidity & Temperature Recorder

FEATURES

- ❖ 10 year battery life
- ❖ High speed download
- ❖ N.I.S.T. traceable
- ❖ Real-time operation
- ❖ Low cost
- ❖ Programmable start time
- ❖ Reusable
- ❖ Miniature size
- ❖ User-friendly

APPLICATIONS

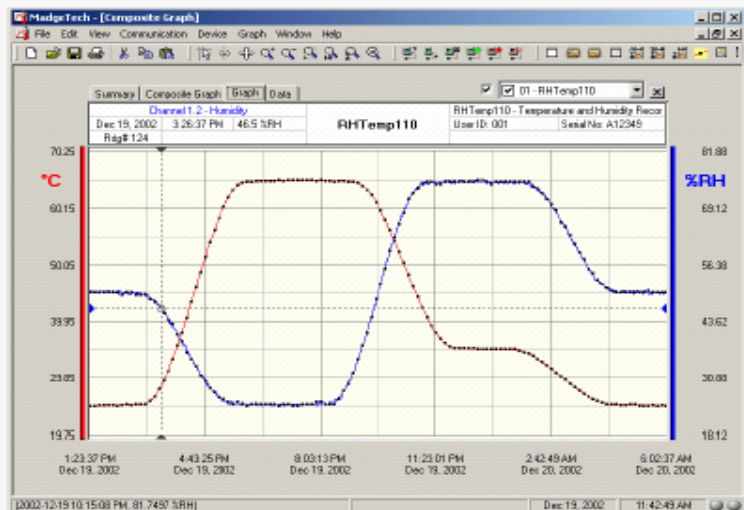
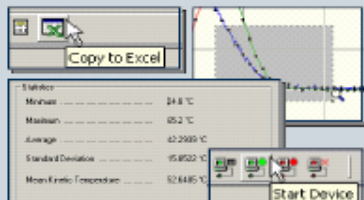
- ❖ Remote data logging
- ❖ Warehouse monitoring
- ❖ HVAC
- ❖ Medical/Pharmaceutical
- ❖ Museum monitoring
- ❖ Environmental studies
- ❖ Replace costly strip chart recorders
- ❖ Implement HACCP programs



The RHTemp110 is a miniature, battery powered, stand alone humidity and temperature recorder. The RHTemp110 features a real-time clock module that extends the battery life to > 10 years* and allows for high speed downloads. This is an all-in-one compact, portable, easy to use device that will measure and record up to 21,845 measurements per channel. The storage medium is non-volatile solid state memory, providing maximum data security even if the battery becomes discharged. The device can be started and stopped directly from your computer and it's small size allows it to fit almost anywhere. The RHTemp110 makes data retrieval quick and easy. Simply plug it into an empty com port and our user-friendly software does the rest.

SOFTWARE

MadgeTech's Data Recorder Software is an easy to use Windows-based software package that allows the user to effortlessly collect, display and analyze data. A variety of powerful tools allow you to examine, export, and print professional looking data with just a click of the mouse.





RHTEMP110 SPECIFICATIONS

Temperature Sensor: Semiconductor	Memory: 21,845 readings per channel
Temperature Range: -40 °C to +80 °C	Reading Interval: 1 reading every 2 seconds to 1 every 12 hours
Temperature Resolution: 0.1 °C	Calibration: Digital Calibration through software
Calibrated Accuracy: ±0.5 °C(0 to +50°C)	Calibration Date: Automatically recorded within device
	Power: 3.6V lithium battery included
Humidity Sensor: Semiconductor	*User Replaceable Battery: 10 years (15 minute reading rate, 25 °C)
Humidity Range: 0 to 100% RH	Data Format: Date and time stamped °C, °F, °K, °R ; %RH, mg/ml water vapor concentration
Humidity Resolution: 0.5% RH	Time Accuracy: ±1 minute/month (at 20 °C to 30 °C)
Calibrated Accuracy: ±3%RH (±2% RH typical at 25 °C)	Computer Interface: PC serial or RS232C COM (Interface cable required); 57,800 baud
Response Time: 90% change in 60 seconds in slow moving air	Software: Windows 95/98/ME/NT/2000/XP based software
	Operating Environment: -40 °C to +80 °C, 0 to 95 %RH non-condensing
Start Time: Software programmable Start time and date. Up to six months in advance	Dimensions: 1.61" x 2.26" x 0.76" (41mm x 58mm x 20mm)
Real Time Recording: May be used with PC to monitor and record data in real time	Weight: 2 oz (60 g)

SOFTWARE FEATURES

Multiple Graphs: Simultaneously analyze data from several units or deployments; easily switch to a single data series	Statistics: Calculate averages, min, max, standard deviation, and mean kinetic temperature with the touch of a button
Real-Time Recording: Collect and display data in real-time while continuing to log	Export Data: Export data in a variety of common formats, or switch to Excel with a single click
Graphical Cursor: One click displays readings by time, value, parameter or sample number	Calibration: Fully digital calibration function automatically stores parameters in device
Data Table: Instantly access tabular view for detailed dates, times, values, and annotations	Logger Configuration: Easy set up and launch of data loggers with immediate or delayed start, preferred sample rate, and device ID
Scaling Options: Autoscale function fits data to the screen, or allows user to manually enter their own values	Communications: Automatically sets up communications port, or lets user set configuration
Formatting Options: Change colors, line styles, plotting options, show or hide channels in an instant	Printing: Automatically print graphical or tabular data

**As part of our commitment to continuous product improvement, MadgeTech reserves the right to change product specifications without notice

ORDERING INFORMATION		ASK ABOUT OUR OTHER DATA RECORDERS	
Model	Description	Temperature	Voltage
RHTEMP110	Humidity & Temperature Recorder	Humidity	Current
IFC110	Software, manual and 9-pin computer interface cable	Pressure	Submersible
N.I.S.T. Cert	N.I.S.T. Calibration Certificate	pH	Intrinsically Safe
		Level	RF Transmitters
		Shock/Vibration	Multi-parameter
		Pulse/Event	