

High-Energy AC Surge Protection Module

DS150E



Citel's DS150E line of AC surge protection modules are designed for high exposure applications such as direct lightning strikes, capacitor bank switching, and large inductive loads. With its single pole design, it offers the user unmatched flexibility when installing into different system packages and voltage configurations. Many OEM's utilize the rugged DS150E modules as their protection component of choice for mission critical equipment.

Applications

- Service entrance and distribution panels
- Control panels feeding VSDs, PLCs, etc.
- Distribution panels feeding heavy loads
- Lighting panels

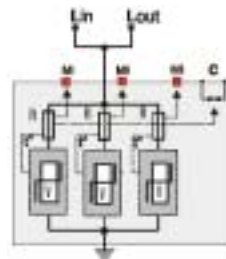
Standards & Guidelines

UL 1449 2nd Edition	USA
IEC 61643-11	International
ANSI/IEEE C62.41	USA
NFC 61740-95	France
VDE0675-6	Germany
CSA C22.2	Canada
CE Marked	European

OEM AC Surge Protection

- 165kA transient amps protection (8/20µs)
- 15kA transient amps protection (10/350µs)
- Multi-redundant protection circuit
- Triple stage fault indicators and remote alarm
- 35mm DIN Rail mounting
- 10-Year warranty
- Available in NEMA 4/12 enclosure

Electrical Diagram



V: High-energy varistor  
 Ft: Thermal fuse  
 C: Remote signaling contact  
 t°: Thermal disconnection  
 MI: Disconnection indicator

Specifications

Citel Model DS150E	-120	-300	-400
System Voltage	120/208V 120/240V 120V	220/380V 240/415V 240V	277/480V 347/600V
MCOV	150V	330V	440V
I <sub>peak</sub> 8/20µs	165kA	165kA	165kA
I <sub>peak</sub> 10/350µs	15kA	15kA	15kA
ClampV @ 10kA	445V	975V	1170V
ClampV @ 500A	385V	815V	925V
Diagnostics	Triple stage fault indicators and remote alarm.		
Housing Materials	Polycarbonate UL94-V0		
Operating Temperature	-40°C to +85°C		
Operating Altitude	13,000 ft (400m)		
Connection Method	Parallel		
Protection Type	MOV based		
Connection	screw terminals, 1x 50mm <sup>2</sup>		
Protection Modes	L-N; L-G; N-G; L-L		
Dimensions	99Hx36Wx67D (in mm)		