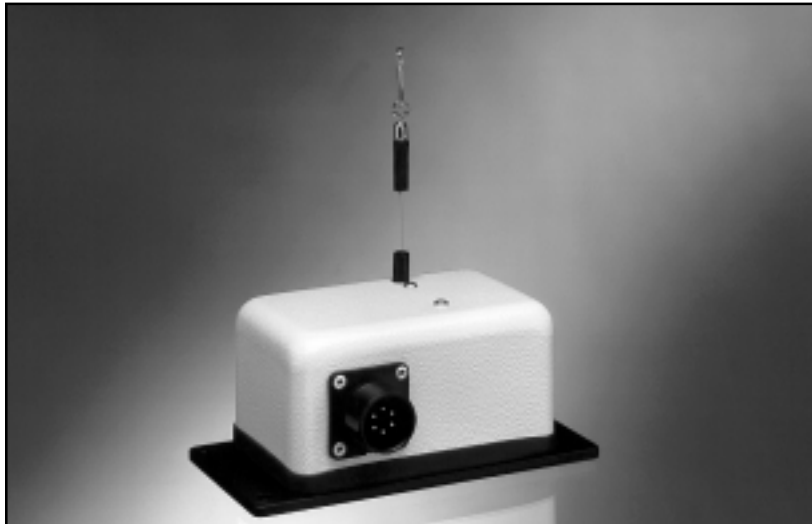


Cable-Extension Position Transducer

- Short to Medium Range CE
- Unregulated Input / 0...10 VDC Output



Standard Specifications:

GENERAL

Range 0-2, -5, -10, -15, -20, -25, -30, -40, -50, -60, -75, -100 inches
 Weight 2 lb. typical
 Enclosure Materials powder coated and anodized aluminum
 Sensor plastic-hybrid precision potentiometer
 Electrical Connector MS3102E-14S-6P
 Mating Plug (included) MS3106E-14S-6S

ELECTRICAL

Sensing Circuit Options 1 & 3*:
 Input Voltage 14.5 - 50 VDC
 Output Voltage 0 -10 VDC
 Sensing Circuit Options 2 & 4*:
 Input Voltage 10.5 - 50 VDC
 Output Voltage 0 - 5 VDC
 Input Current 10mA maximum
 Output Impedance 1000 ohms
 Maximum Output Load 5000 ohms

*see ordering information

PERFORMANCE

Accuracy:
 2 and 5 inch ranges ± 0.25% full stroke
 10, 15 and 25 inch ranges ± 0.15% full stroke
 20 inch, 30 inch, and greater ± 0.10% full stroke
 Resolution essentially infinite
 Zero and Span Adjustment Range 2:1 turndown

MECHANICAL

Measurement Range (Inches)	Cable Tension (Ounces, ±30%)	Max. Cable Acceleration (Gravities)
0- 2, -10, -20	12	11
0- 5, -25, -50	5	2
0-15, -30	8	3
0-40	6	4
0-60	13	4
0-75	10	3
0-100	13	2

Optional Cable Tension see ordering information
 Measuring Cable 0.019-inch dia. nylon-coated stainless steel
 Measuring Cable Fitting crimp and swivel

ENVIRONMENTAL

Operating Temperature -40° F to +200° F
 Operating Humidity, Splash NEMA 1
 Vibration up to 10G's to 2000 Hz

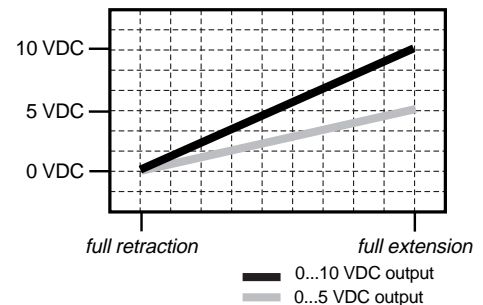
PT510

The PT510 Cable-Extension Transducer provides a regulated 0-10V feedback signal that is linearly proportional to the position of a traveling stainless steel extension cable.

For industrial applications, users can adjust the zero and span settings in order to match the sensitivities of multiple transducer systems. For applications requiring position feedback data from mobile equipment or sites with access only to unregulated 12V power supplies, the PT510 is ideal.

The PT510 installs in minutes by mounting its base to a fixed surface and attaching its cable to the movable object. The PT510 works without perfect parallel alignment, and when its stainless steel cable is retracted, its height is less than 5".

Electrical Output Signal



Latin Tech, Inc.

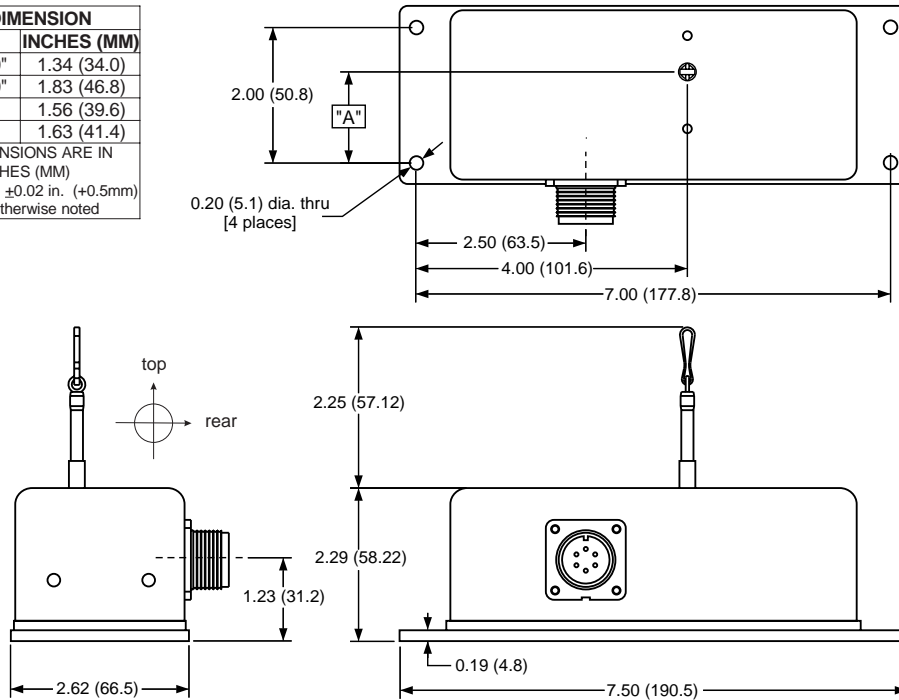
www.lt-automation.com info@lt-automation.com

PT510 Short to Medium Range • 0...10 VDC Output

outline drawing (2 thru 50 inch f.s. ranges)

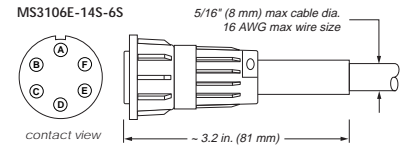
"A" DIMENSION	
RANGE	INCHES (MM)
2", 10", 20"	1.34 (34.0)
5", 25", 50"	1.83 (46.8)
15", 30"	1.56 (39.6)
40"	1.63 (41.4)

ALL DIMENSIONS ARE IN INCHES (MM)
tolerances are ±0.02 in. (+0.5mm) unless otherwise noted

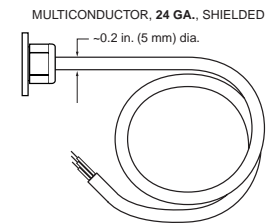


Electrical:

Mating Plug



Instrumentation Cable



Ordering Information / Model Number:

PT510 - - **1** - **1** - **1** **0**
order code: **A** **B** **C** **D** **E** **F** **G**
sample: PT510-0025-111-1110

Full Stroke Range

0002 = 2 inches	0030 = 30 inches
0005 = 5 inches	0040 = 40 inches
0010 = 10 inches	0050 = 50 inches
0015 = 15 inches	0060 = 60 inches
0020 = 20 inches	0075 = 75 inches
0025 = 25 inches	0100 = 100 inches

A Measuring Cable Tension

1 = standard (see MECHANICAL specifications)

NOTE: options 2, 3, and 7 below are available for RE-ORDER only!

2 = increased (approx. 4 x standard cable tension, 0.024 inch dia. measuring cable)*

3 = high (approx. 8 x standard cable tension, 0.024 inch dia. measuring cable)*

7 = decreased (same as standard cable tension)

C Measuring Cable Exit

NOTE: options 2, 3, and 4 below are available for RE-ORDER only!

1 = top exit 2 = front exit 3 = rear exit 4 = bottom exit

E Output

1 = 0-10 VDC, output increasing with cable extension
 2 = 0-5 VDC, output increasing with cable extension
 3 = 10-0 VDC, output decreasing with cable extension
 4 = 5-0 VDC, output decreasing with cable extension

F Electrical Connection

1 = 6-pin plastic connector and mating plug
 2 = terminal strip
 3 = 6-pin metal connector and mating plug
 4 = 25 ft. instrumentation cable

* note: mechanical dimensions may vary from outline drawing above

Electrical Connections

		input voltage	output voltage	com.
6-pin conn.	A	●		
	B		●	
	C			●
	D			
	E			
	F			
instr. cable	WHT	●		
	BLK			●
	GRN		●	