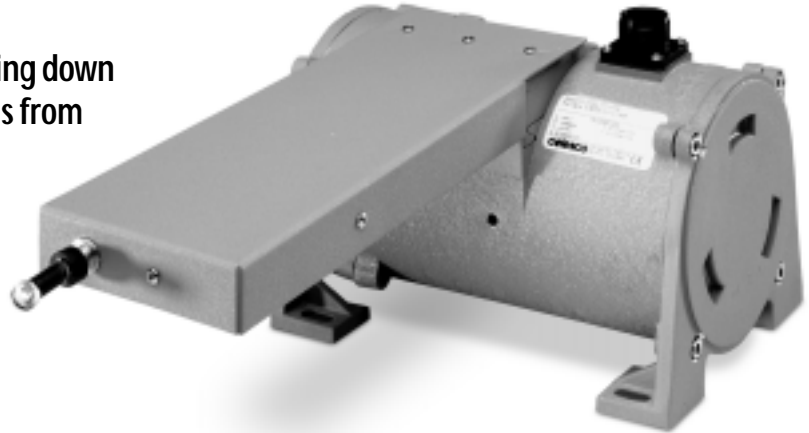


# RBS9000

- RBS option offers extra protection against extraordinarily dirty environments
- RBS option reduces the cable-exit opening down to a single point to prevent excess debris from entering the spool cavity
- RBS option uses two sets of cable brushes to help clean the measuring cable before it is retracted into the enclosure



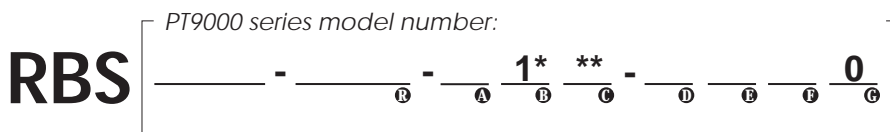
Designed for extreme applications where exceptional amounts of dirt, spray or some other foreign matter may enter through the standard PT9000 'slot opening' and interfere with the cable reel mechanism.

The RBS9000 reduces the cable opening down to a single-point exit to block most debris from entering the cable-reel area. Because some debris may

get drawn into the transducer by the measuring cable upon retraction, we've taken two measures to help reduce that. First, each RBS9000 is constructed using our nylon-coated measuring cable which has a smooth layer of protection that helps keep debris from clinging to it. Second, the measuring cable passes through two integral brushes which help wipe away any matter that may be clinging to it.

## Ordering Information

The appropriate PT9000 Series transducer can be selected from any model found in the Celesco PT9000 and PT9000 Extended sections in the Celesco catalog. RBS is used as a prefix for all RBS model designations.



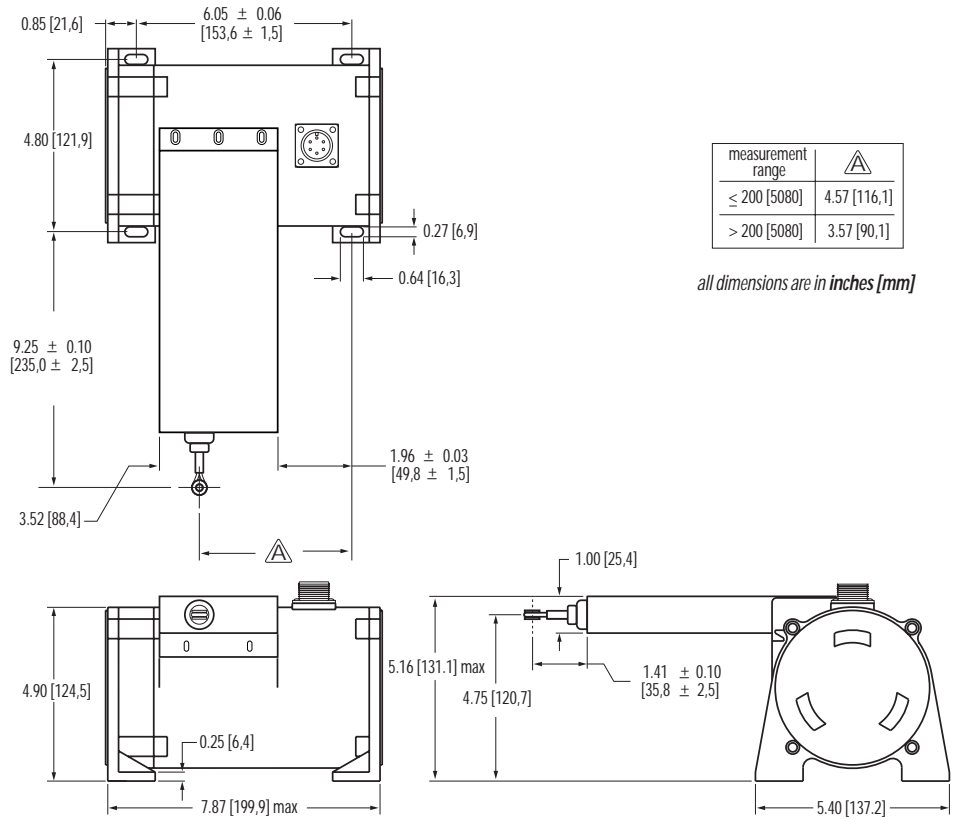
RBS sample order code: RBS9101-0500-111-1110

\* RBS is only available with nylon-coated measuring cable.

\*\* Please refer to RBS9000 Outline Drawings on the following page for specific cable exit dimensions.

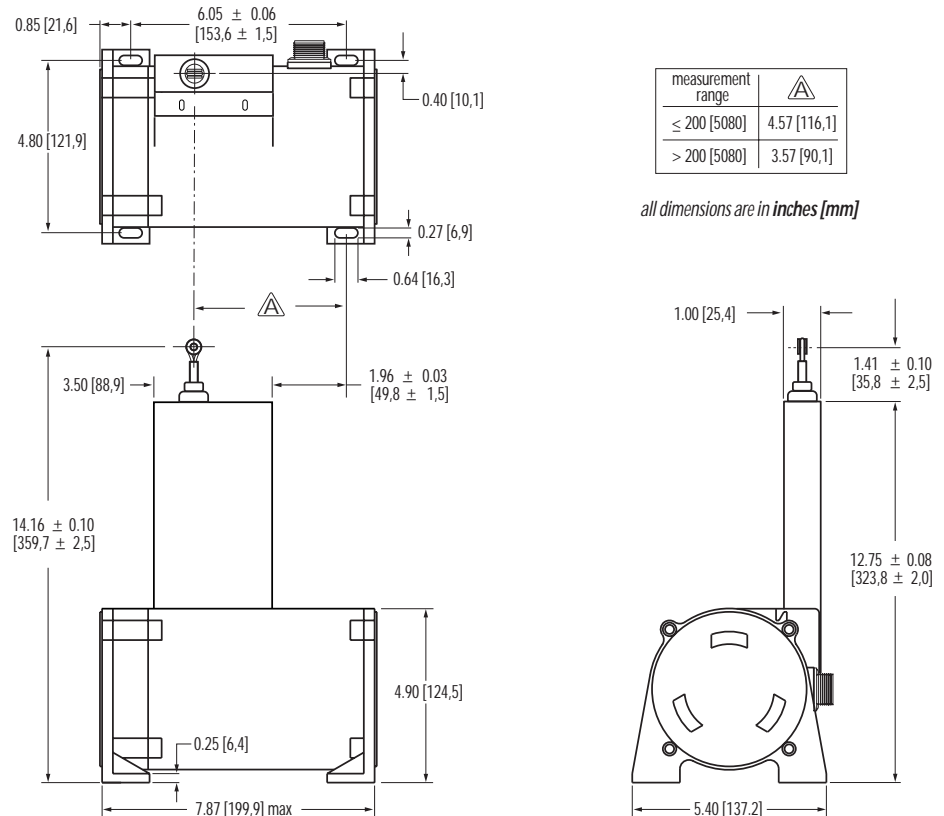
# RBS9000 • Outline Dimensions • Front and Top Cable Exit Options

## Cable Exit • option 1 • front



Note: Dimensions are not valid for 'increased cable tension' option. Please contact factory for correct dimensions.

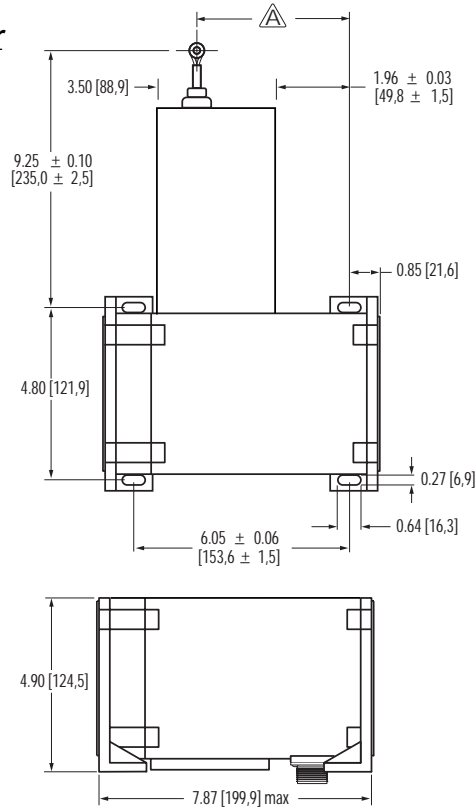
## Cable Exit • option 2 • top



Note: Dimensions are not valid for 'increased cable tension' option. Please contact factory for correct dimensions.

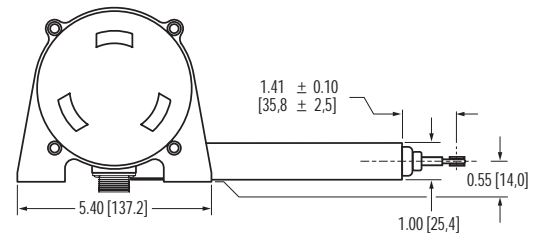
# RBS9000 • Outline Dimensions • Rear and Bottom Cable Exit Option

## Cable Exit • option 3 • rear



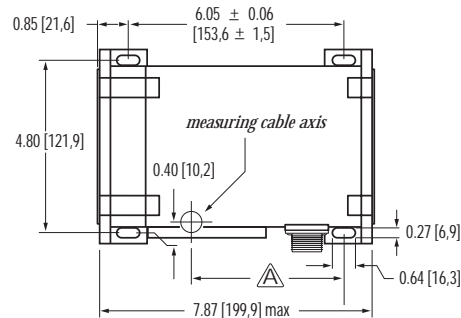
measurement range	
≤ 200 [5080]	4.57 [116,1]
> 200 [5080]	3.57 [90,1]

all dimensions are in inches [mm]



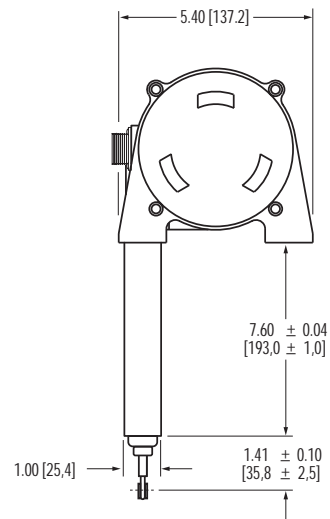
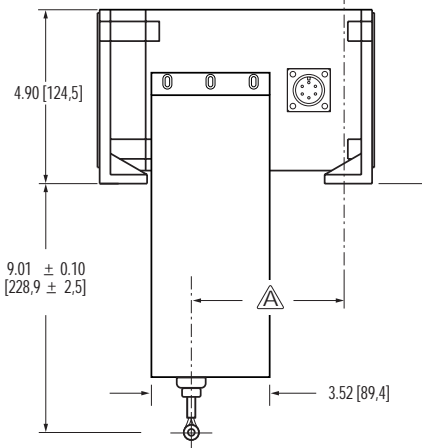
Note: Dimensions are not valid for 'increased cable tension' option. Please contact factory for correct dimensions.

## Cable Exit • option 4 • bottom



measurement range	
≤ 200 [5080]	4.57 [116,1]
> 200 [5080]	3.57 [90,1]

all dimensions are in inches [mm]



Note: Dimensions are not valid for 'increased cable tension' option. Please contact factory for correct dimensions.