

Features

- ③ N.I.S.T. traceable
- ③ Real-time operation
- ③ Low cost
- ③ Programmable start time
- ③ Reusable
- ③ Miniature size
- ③ User-friendly
- ③ CE compliant

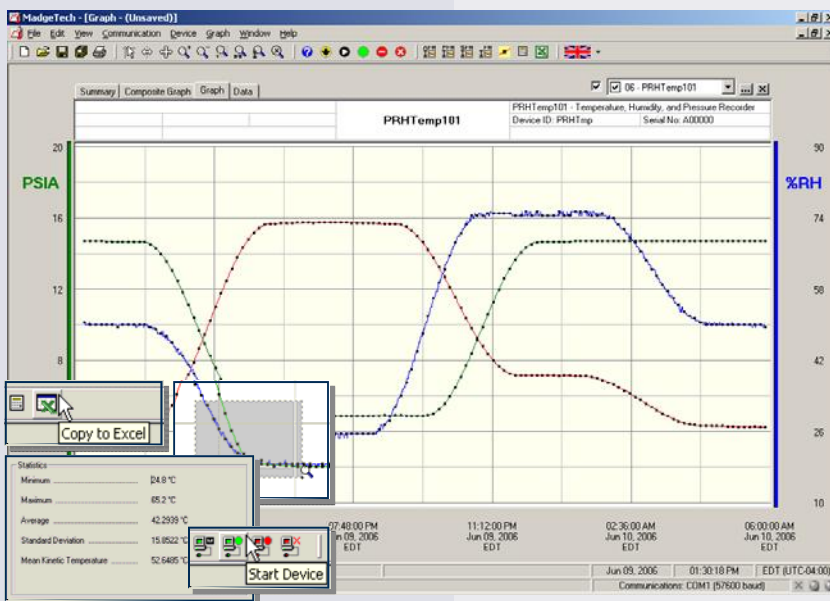
Applications

- ③ Altitude validation
- ③ Warehouse monitoring
- ③ HVAC
- ③ Medical and Pharmaceutical
- ③ Museum monitoring
- ③ Environmental studies
- ③ Implement HACCP programs
- ③ Research and Development
- ③ Food and storage
- ③ Shipping live cargo

The PRHTemp101 is a miniature, battery powered, stand alone pressure, humidity and temperature recorder. This is an all-in-one compact,



portable, easy to use device that will measure and record up to 13,107 measurements. The storage medium is non-volatile solid state memory, providing maximum data security even if the battery becomes discharged. The device can be started and stopped directly from your computer and it's small size allows it to fit almost anywhere. The PRHTemp101 makes data retrieval quick and easy. Simply plug it into an empty COM or USB port and our user-friendly software does the rest.



Data Recorder Software displays pressure, humidity and temperature data in an easy to use graph.

The Windows®-based software package allows the user to effortlessly collect, display and analyze data. A variety of powerful tools allow you to examine, export, and print professional looking data with just a click of the mouse.

PRHTEMP101 SPECIFICATIONS*

Temperature Range: -40 to +80°C	Memory: 13,107 readings per channel; 39,321 total readings
Temperature Resolution: 0.1°C	Reading Rate: 1 reading every 2 seconds to 1 every 12 hours
Calibrated Accuracy: ±0.5°C(0 to +50°C)	Calibration: Digital calibration through software
Humidity Range: 0 to 95%RH	Calibration Date: Automatically recorded within device
Humidity Resolution: 0.5%RH	Battery Type: 3.6V lithium battery included; user replaceable
Calibrated Accuracy: ±3%RH (±2%RH typical at 25°C)	Battery Life: 1 year typical
Specified Accuracy Range: +10 to +40°C, 10 to 80%RH	Data Format: Date and time stamped °C, °F, K, °R ; %RH, mg/ml water vapor concentration; PSIA, inHg, mmHg, bar, atm, Torr, Pa, kPa, MPa, altitude
Pressure Range: 0 to 30PSIA	Time Accuracy: ±1 minute/month (at 20°C, RS232 cable not in use)
Pressure Resolution: 0.002PSIA	Computer Interface: PC serial or USB (interface cable required); 2,400 baud
Calibrated Accuracy: ±1.0%FSR at 25°C; ±0.2% typical	Software: Windows 95/98/ME/NT/2000/XP/Vista based software
Start Modes: Software programmable immediate start or delay start up to six months in advance	Operating Environment: -40 to +80°C, 0 to 95%RH non-condensing
Real Time Recording: May be used with PC to monitor and record data in real time	Dimensions: 1.7" x 2.3" x 0.9" (44mm x 59mm x 23mm)
	Weight: 1.1 oz (31 g)
	Approvals: CE, Approved for carriage on Delta® mainline flights

SOFTWARE FEATURES

Multiple Graphs :	Simultaneously analyze data from several units or deployments; easily switch to a single data series	Statistics:	Calculate averages, min, max, standard deviation, and mean kinetic temperature with the touch of a button
Real-Time Recording:	Collect and display data in real-time while continuing to log	Export Data:	Export data in a variety of common formats, or switch to Excel® with a single click
Graphic al Cursor:	One click displays readings by time, value, parameter or sample number	Calibration:	Automatically calculate and store calibration parameters
Data Table:	Instantly access tabular view for detailed dates, times, values, and annotations	Logger Configuration:	Easy set up and launch of data loggers with immediate or delayed start, preferred sample rate, and device ID
Scaling Options:	Autoscale function fits data to the screen, or allows user to manually enter their own values	Communications:	Automatically sets up communications port, or lets user select configuration
Formatting Options:	Change colors, line styles, plotting options, show or hide channels quickly	Printing:	Automatically print graphical or tabular data